

T H E A R T F  
R T I S I N G  
S T A N D R I  
R A I L R O A  
B E T H E A R  
T I S I N G C  
S T A N D R I  
A R A I L R O  
R N I T U R E



I T U R E C  
M N T E N O  
H A W L O T  
A L L P A N  
R N I T U R  
N T E N O R  
H A W L O T  
W A L L P A  
Y A S T R I

P H A B E T H E A R T F U R N I  
I A D V E R T I S I N G C O L U M  
C Y C L E S T A N D R I C K S H  
O N I T A R A I L R O A D C A W A  
A L P H A B E T H E A R T F U R  
A D V E R T I S I N G C O L U M N  
C Y C L E S T A N D R I C K S H  
B O N I T A R A I L R O A D C A W  
A R T F U R N I T U R E C I T Y

T U R E C I T Y  
N T E N O R D U E  
A W L O T T A  
L L P A N E L S  
N I T U R E C I T Y  
T E N O R D U E  
A W L O T T A  
A L L P A N E L S  
A S T R I N I

## TABLE OF CONTENTS

- 05** Andrzej Stróżyk – Patron of the Project
- 06** Advertising column Tenor
- 08** City „welcome” column
- 12** Tradition and innovativeness – rickshaw Lotta
- 14** Active recreation with Bonita railroad car
- 16** Meeting your needs – bicycle stands
- 18** Wall panels – harmony and functionality
- 20** Furnishing the city
- 21** Heart, the magic of colours causing smiles...
- 22** Concept, design your city
- 22** “Q” – the symbol of quality and trust
- 23** Inspiring play on words
- 24** City Alphabet
- 26** Ecostyle creation
- 27** From the practical viewpoint

A B E T H E A R T F U R N I T U R  
E R T I S I N G C O L U M N T E N  
L E S T A N D R I C K S H A W L O  
A R A I L R O A D C A W A L L P  
B E T H E A R T F U R N I T U R E  
R T I S I N G C O L U M N T E N  
L E S T A N D R I C K S H A W L O  
T A R A I L R O A D C A W A L L  
F U R N I T U R E C I T Y A S T R

E C I T Y

O R

We created the brand Astrini Design in response to the need to shape modern urban space, combining aesthetics and functionality, enabling the expression of one's own self.

T T A

A N E L S

C I T Y

O R D U E

T T A

P A N E L S

I N I



**Andrzej Stróżyk**  
Patron of the Project



# ADVERTISING COLUMN TENOR

AN ORDINARY PILLAR?  
NOTHING COULD BE MORE  
WRONG.

Firstly the material cannot be any material. The ideal one would be temperature-, fire- and damage-resistant, easy to maintain, use and clean – polyester and glass fibre laminate is the ideal material.

Secondly, design – neutral, stylish and elegant. With dedicated space for logo or city crest. The pillar that does not dominate and does not distract the reader but presents information in a clear and interesting form.

Thirdly, functionality – equipped with rain-protecting roof, accessible from all sides, aesthetic and durable.

This is our TENOR poster pillar.

NEUTRAL AND ELEGANT



SERVES AS LIGHTING AND BILLBOARD

STYLISH

A L B E R T F U R

B I L S I N G C O L L

B O A I R U A

N A B E T H E A R T F

A R T I S I N G C O L U

B C Y C L E S I C K

FREE YOUR CREATIVITY

B O N I T A I L R O A D C

FREE YOUR CREATIVITY



### UTILITY FUNCTION

#### CHARACTERISTICS

- coloured laminate
- colours to be selected by the client
- UV resistance
- 10 m² of advertising space
- stable construction – placed on a concrete ring of 350 kg
- a concrete ring being an internal built-in foundation of the pillar
- 450-500 kg of weight
- self-supporting construction
- 5-year warranty
- installation and assembly at the selected location and place

### THREE EQUIPMENT OPTIONS:

#### LED + SOLAR PANELS

- 4 x 1 m LED lighting
- battery
- charging regulator
- twilight sensor
- 700 x 700 mm solar panel installed on the roof
- 4 x city crest (cast)

#### LED 230 V

- RGB lights as an option
- 4 x 1 m LED lighting
- 12V waterproof power supply
- twilight sensor
- 4 x city crest (cast)

#### NO LIGHTING



MODERNITY

Ideal, perfect, ready for your posters!

## CITY „WELCOME” COLUMN

### FIRST IMPRESSION

First impression is always very important. First „good morning” may be of great importance with regard of further reception. This is the reason why we have prepared the column which shows the character of the city to people who enter it. The basis is elegance, lightness, functionality and modern design. And these were the foundations of our designers' idea for the column's main outline. Given the fact that every city is different and wants to say something else, this project is very flexible. While maintaining the assumptions it is individually adapted to the city, so as to express its character and show its advantages - the first urban „good morning”.

### ELEGANCE STYLE





LIGHT



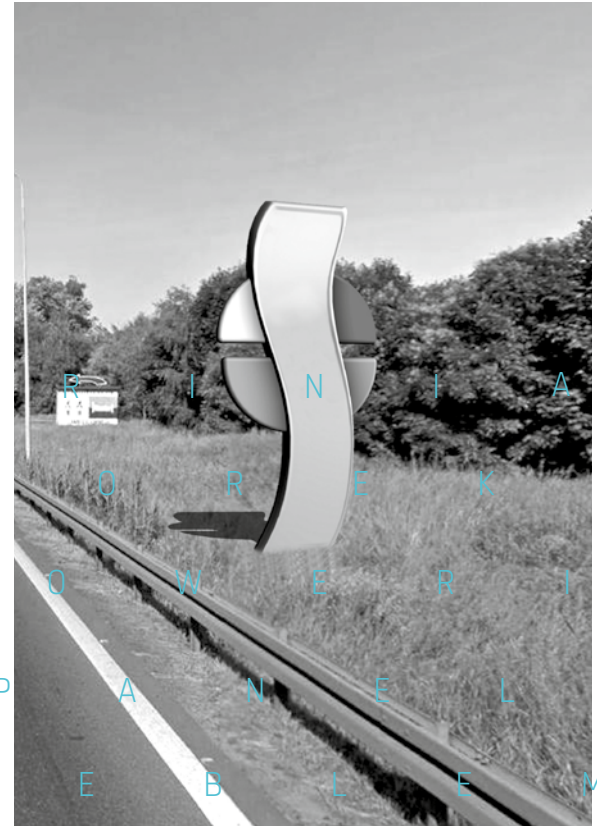
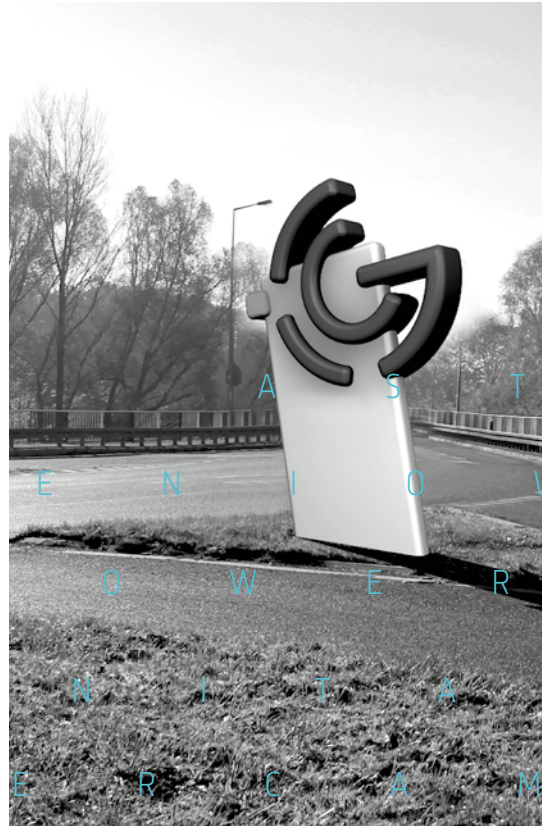
As usually, the same in this case, we accept no compromises. Our columns are durable, made with the utmost care, with dedicated space for arms and the name, some small text, in any color, in matching, inviting form.

I  
K  
R  
L

E M I E J S K I E D U E  
I N I A L P H A FUNCTIONALITY  
R E K L A M O W Y

## WELCOME

Welcome columns are no longer just signboards but also an artistic form, a kind of art that reflects the character of the city and its citizens. Every city is unique, and so will be each and every welcome column proposed by our designers.



FREE YOUR CREATIVITY

FREE YOUR CREATIVITY



MODERN DESIGN

P  
A  
M  
S  
S  
C  
E  
A  
L  
P  
H  
A  
B  
E  
T  
L  
A  
M  
O  
W  
Y  
I  
K  
S  
Z  
A  
L  
O  
T  
T  
A

INNOVATIVENESS



B I C Y C L E S T A N TECHNOLOGY I C K

B O N I T A R A I L R O A D

TRADITION

## RICKSHAW – LOTTA THE 21ST CENTURY

Rickshaw is a worldwide popular mean of transport for eco traveling through the city. It was first built over 200 years ago in Japan and until these days it is still very popular around the world.

The rickshaw project mixes tradition with a drop of modernity, a brush-stroke of modernism and a bit of a 21st century innovativeness.

Lotta is a high-class urban vehicle. Its body is made of light and durable polyester and glass fibre laminate.

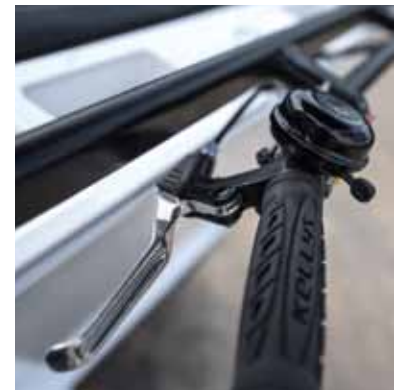
The seats and backrest are coated with the highest quality material selected by the client. The colour of the body and seats is chosen by the client. The rickshaw may be powered by hu-

man muscles or with a built-in electric engine with replaceable battery. The distance which the rickshaw may travel was a real challenge to constructors. The result is impressive: approximately 60 kilometres at one battery charging. The charging time is two hours only.

The state-of-the art technologies and the possibility of installing solar panels on the roof to support the battery are a tribute to ecology.

This is an ideal vehicle from economic and ecologic point of view.

It represents respect for tradition and care for natural environment.



E

URBAN MODERNITY

N I T  
U 1  
S H A  
W A  
U R N  
M N  
S H A W L O T T A  
A W A L L P A N E L S

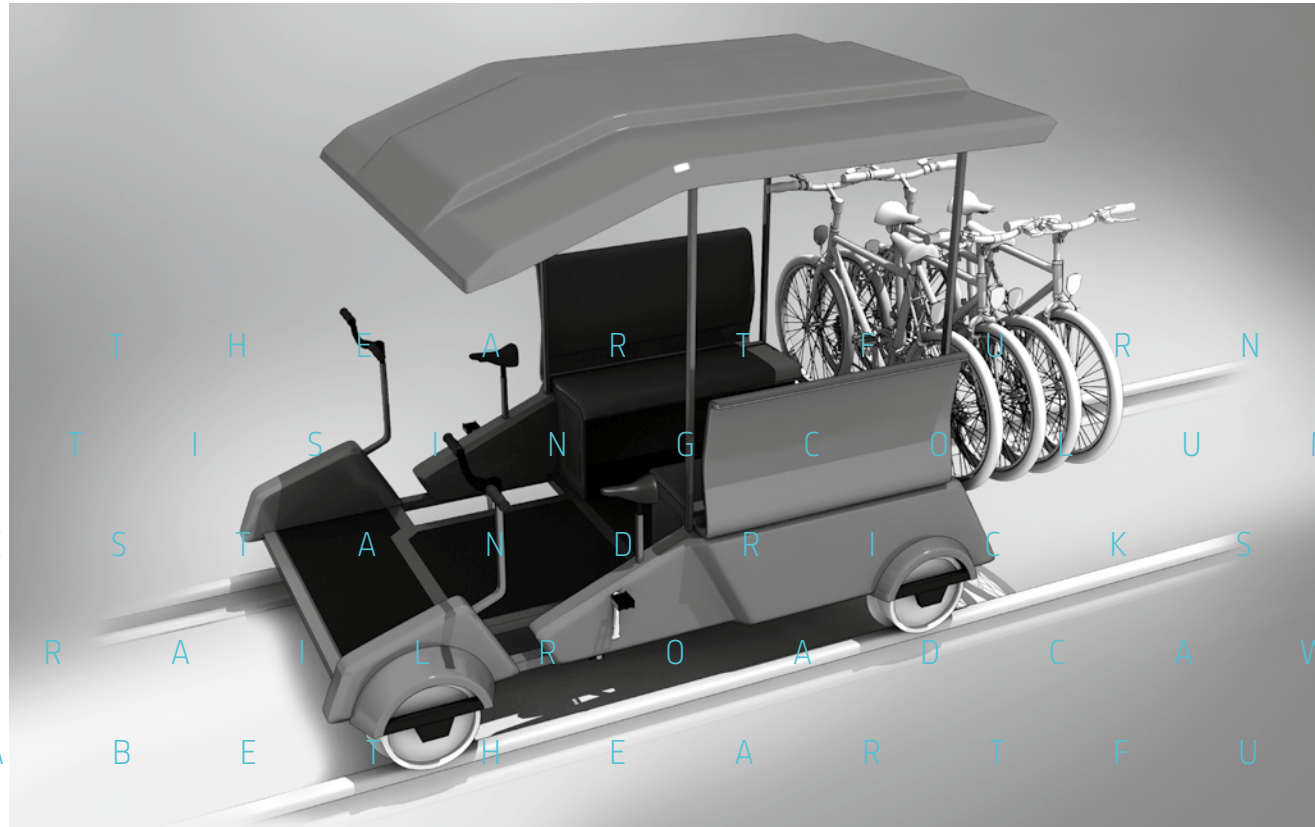
## BONITA RAILROAD CAR

INNOVATIVENESS

PLEASURE  
AND FUN

Active rest has become more and more popular in Poland. BONITA railroad car is an ideal product for people who love biking, new challenges and original design. Elegant, inspired by the look of first cars, our railroad can offer an interesting change to your excursions with family or friends.

But it has more advantages than just its look. It is the lightest handcar in Poland, propelled by legs and not, as in traditional models, by hand. This four- or six-person, cheerful and original form of joint travelling will show you new, friendly and sunnier face of railroads.



FUNCTIONALITY

## SAFETY



**FUNCTIONAL** – light steel structure, solid bike racks, space for pedalling persons and for other travellers, bike water bottle racks, possibility of connecting other railroad cars

**AESTHETIC** – original design inspired by old-fashioned cars

**INNOVATIVE** – surprisingly light (140 kg only), designed for passenger and operating person comfort, easily driven. This leg-propelled vehicle offers more space for movement, requires less effort; untypical materials, handles for short-distance carrying the railroad car

**SAFE** – hip safety belts, stable Thule bike racks (4 bikes), constructed with full attention to passenger safety

THE LIGHTEST

FREE YOUR CREATIVITY

W A L L P A N E L S

CREATED FOR  
THE PEOPLE

MEETING YOUR NEEDS  
- BICYCLE STANDS

It is the city's task to create safe spaces for its residents. For those in pedestrian and street traffic, and for those on bicycles, whose numbers are still growing. Designed in harmony with the philosophy of beautiful spaces, bicycle stands, which also serve as seats, are a remarkable, ingenious solution for cyclists.

Following the requirements and needs while complying with design.

ACTIVITY



FREE YOUR CREATIVITY

FUNCTIONALITY

FREE YOUR CREATIVITY





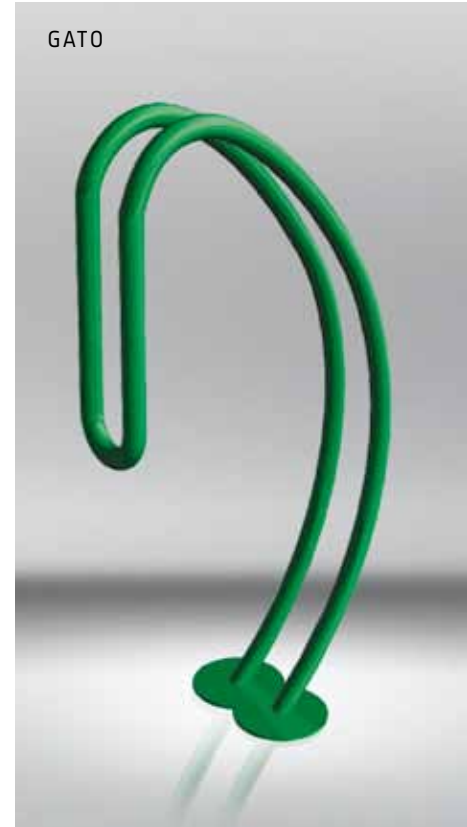
LEGRA



BRYZA



ORTEZ



GATO

HARMONY

BEAUTY IN SIMPLICITY

R

L

K

A

F

U

M

N

T

E

N

O

R

D

U

E

K

S

H

A

W

L

O

T

T

A

FREE YOUR CREATIVITY

L

L

P

A

N

E

L

S

D

C

A

W

A

UNLIMITED POSSIBILITIES



A I P A B E T  
A D V F R S  
B I C Y C L E S  
B O N I T A R  
N I A L P H A B

H E A R T F U R  
T I S I N G C O L U  
A I L R O A D C A  
E T H E A R T F

UTILITY FUNCTION

Our wall panel is more than furniture,  
more than a decorative design, more than a shelf.

B O N I T A R A I L R O A D C

## WALL PANELS

## FUNCTIONALITY

### INDIVIDUAL PROJECTS

A combination of two highly important features: functionality and visual aspect.

In its work, Astrini is inspired by external world and focuses on harmony between aesthetics and utility functions. Our wall panel is more than furniture, more than a decorative design, more than a shelf. It is a multi-functional tool for furnishing your space.

Thanks to its form, quality and universal material it perfectly fits the atmosphere of an office, a luxurious boutique or a cheerful pre-school. The play of shapes, colours and light organises and arranges your space.



## PERFECT COMBINATION OF VARIOUS TEXTURES

N I T  
U M N  
S H A  
W  
U R N  
M  
S H A  
FREE YOUR CREATIVITY  
T E N O  
W L O T T A  
FREE YOUR CREATIVITY  
A W A L L P A N E L S

# FURNISHING THE CITY

## DIALOG

### DUE

Thanks to the original and distinctive structure it presents itself best surrounded by urban landscape. In accordance with our concept, it appears to be a distinctive and intriguing element of the space. Its phenomenon is based on a coherent combination of functionality and artistry. The way it is used is up to the creativity of the people using them - it is up to you. You can sit, drink coffee to go, read the paper, play with your child, talk to friends... The fancy form of Due furniture will release huge reserves of your creativity.



Urban furniture Due is the essence of modern design.

FREE YOUR CREATIVITY

FREE YOUR CREATIVITY

R

I

N

I

A

L

I

P

H

A

B

E

T

H

E

A

R

T

D

C

L

E

S

T

A

N

D

R

I

A

B

E

T

H

E

A

R

T

F

U

A

D

V

E

R

T

I

S

I

N

G

C

O

B

I

C

Y

C

L

E

S

T

R

I

C

B

O

N

I

T

A

R

A

I

L

R

O

A

# HEART, THE MAGIC OF COLOURS CAUSING SMILES...

POSITIVE ENERGY

## JOY OF CREATION

The heart is a multicultural symbol, it is peace, love, joy, life... Hence the greater pleasure of creating...

An impression of shapes, colours, forms. Astrini Design loves challenge, we can design and create something individual, only for you, something for your living room, garden, city or company. Because every space deserves beauty...



R N I  
O L U  
K H A W L  
C A W A L L  
F R N I T  
L U M N T E  
K H A W L O T T A  
D C A W A L L P A N E L S

FREE YOUR CREATIVITY

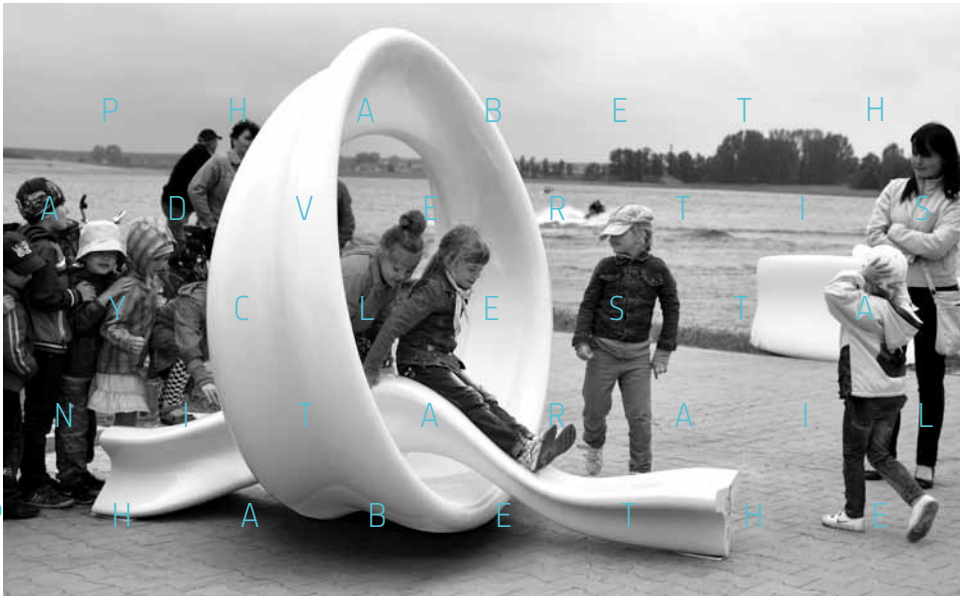
FREE YOUR CREATIVITY

An inspiring play of shapes and colours, a dance of emotions...

## CONCEPT, DESIGN YOUR CITY

Urban space is always teeming with life – after all, it's a group of people, a mix of styles and personalities. The city is also about sleek design and setting new trends. In our opinion, the most important thing is to create places for meetings and leisure, greenery and relaxation. Where everyone can feel “at home” and at the same time be exposed to design at its highest level.

### SMILE



### SAFETY



## “Q”-THE SYMBOL OF QUALITY AND TRUST

The “Q” bench is a spatial form which does not tolerate compromise. It stands for quality, which combines integrity, security, and functionality. But if you look at it through a carefree child’s eyes... you can see an impressive structure to conquer, which opens the gates of creative fun. Without a doubt, “Q” enraptures you. It delights with its form, quality and multitasking. It delights everyone in its own way and at 100%.

## INSPIRING PLAY ON WORDS

Astrini Alphabet is a multi-purpose solution. Each of the thirteen elements provides many opportunities, it is one of a kind, unique. A composition of individual elements creates the letters of the alphabet, and these in turn form a unique combination, alluring with colors and shapes. When looked at from a distance they arrange themselves into a specific meaning, e.g. the name of a city. Play city scrabble with us, create a keyword for your space.

### ARRANGEMENT

R N I  
 U M N  
 S H A  
 W A L L P A  
 N I T U R E C  
 M N T E N O  
 S H A W L O T T A  
 A W A L L P A N E L S

FREE YOUR CREATIVITY

FREE YOUR CREATIVITY

### DESIGN

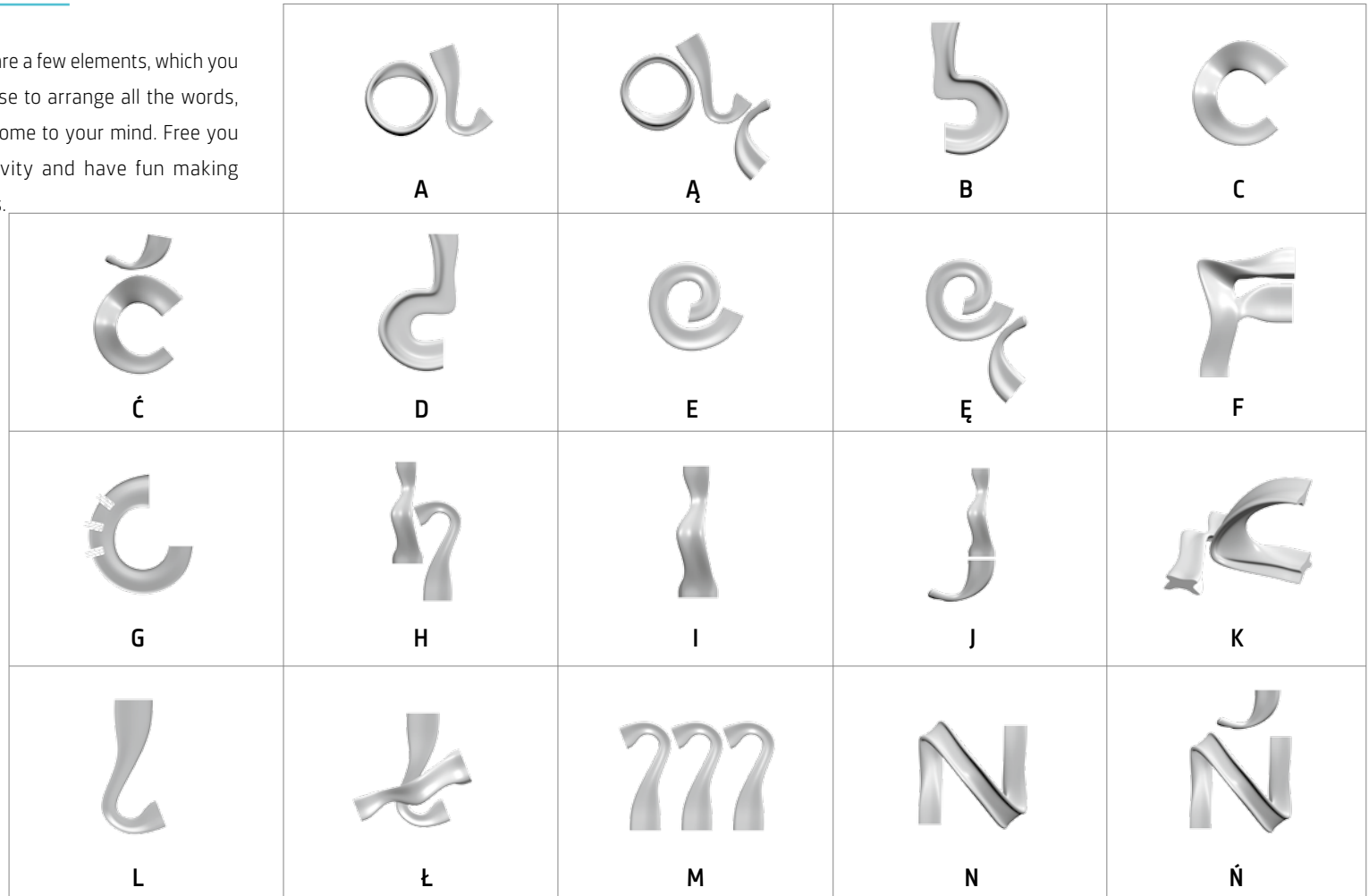


The art of joining eye-catching elements. Thirteen puzzles make up for an infinite number of meanings.

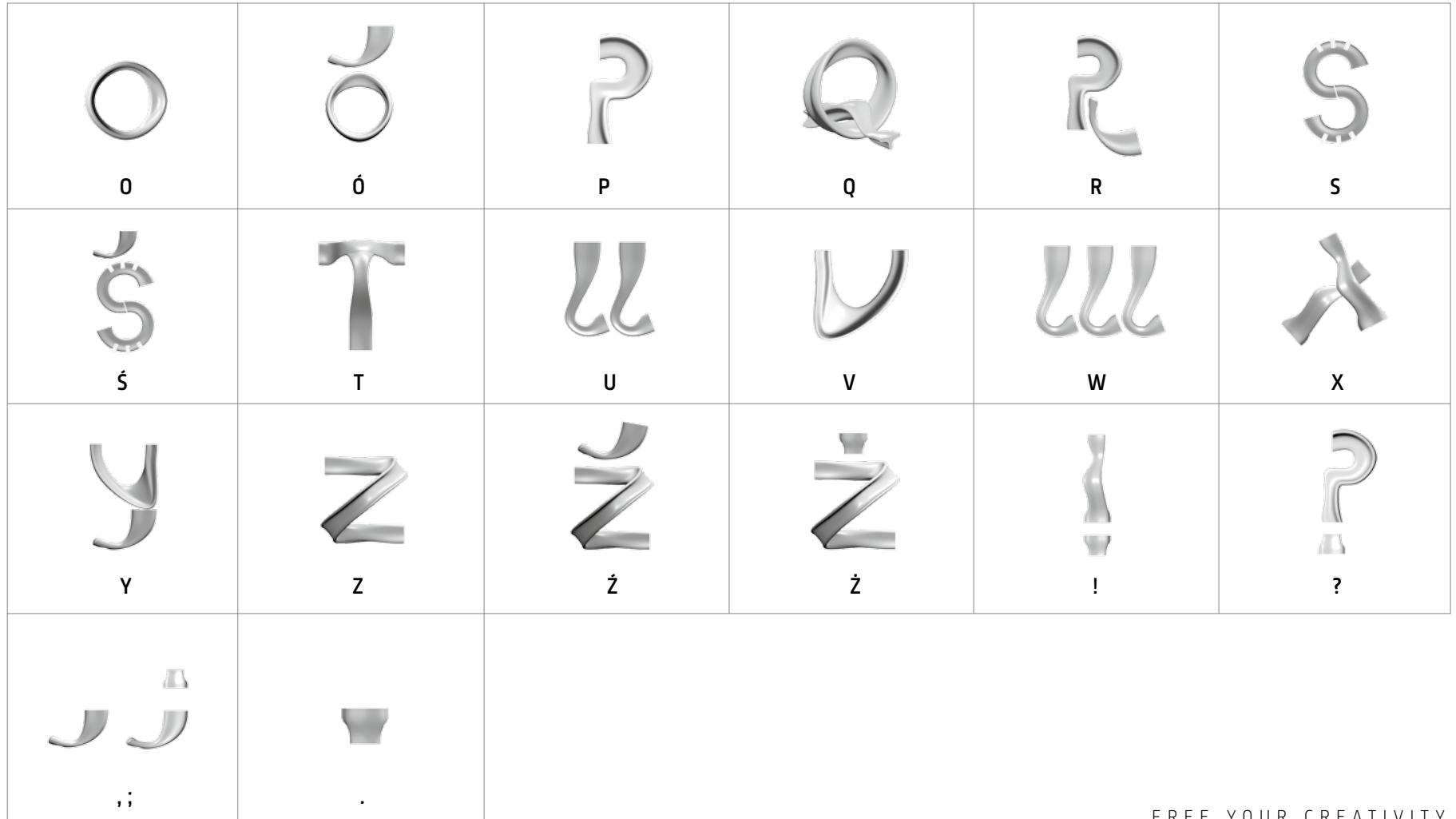
## CITY ALPHABET

### MODERN DESIGN

Here are a few elements, which you can use to arrange all the words, that come to your mind. Free your creativity and have fun making words.







# ECOSTYLE CREATION

THE ASTRINI DESIGN PHILOSOPHY  
IS BASED ON COMBINING EYE-CATCHING DESIGN  
WITH THE HIGHEST QUALITY MATERIALS.



## 01 MATERIALS

Carefully selected high-quality materials guarantee the excellent quality of our products, their durability and resistance to dirt, mechanical damage and weather conditions.

## 02 WE CARE FOR THE ENVIRONMENT

Use of organic raw materials contributes to environmental protection. It is vital for us that our actions do not disrupt the balance of nature.

## 03 COLOURS

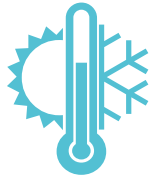
The innovative technology that we use allows for a rich, almost unlimited range of colours.

## 04 SHAPES

Subtle or strong, romantic, inspiring, delightful, pulled out of the world of your imagination. We can make any shape, even the most unusual one, also one designed by you.

## FROM THE PRACTICAL VIEWPOINT

We do everything to make our furniture delightful not only with its aesthetics, but also with its functionality. It is completely resistant to external, environmental factors.



RESISTANT TO TEMPERATURE CHANGES



LIGHT



DESIGN AND PRODUCTION ON REQUEST



PERFECT SMOOTHNESS



REPAIRABLE



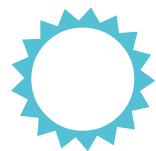
A WIDE PALETTE OF COLOURS



ULTRA HYGIENIC



WARM SURFACE



UV RESISTANT



IMPACT RESISTANT



STAIN RESISTANT



EASY TO CLEAN



RESISTANT TO WEAR AND TEAR



A 60-MONTH WARRANTY

It is also extremely easy to keep clean. This makes it a practical, functional and beautiful element of the space. Astrini Design furniture is dedicated to spaces.

R N I T U R E C I T Y

O L U M N T E N O R D U E

K S H A W L O T T A

C A W A L L P A N E L S

F U R N I T U R E C I T Y

L U M N T E N O R D U E

K S H A W L O T T A

D C A W A L L P A N E L S

I T Y A S T R I N I



Astrini Design, ul. Graniczna 7  
Wilkowice, 64-115 Świąciechowa  
T: +48 65 529 91 91, F: +48 65 529 78 88  
E: studio@astrini-design.pl, www.astrini-design.pl

The Astrini Design brand is owned by:

